

Applications in CADD Ltd.

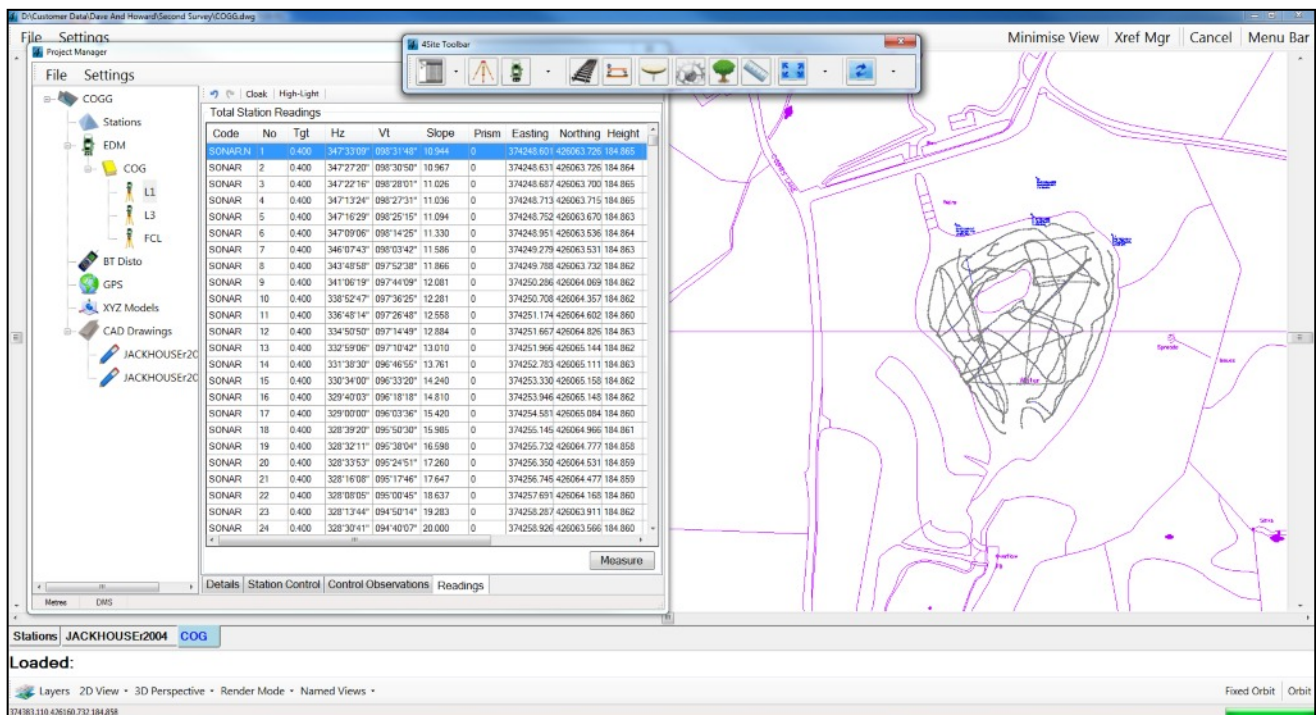
Hydrographic Surveying using a Model Boat



Linking survey hardware to Sonar transducers is something Surveyors and Hydrographic engineers have been doing for a number of years. However AiC, working together with *Acorn Surveys Ltd*, have developed a unique software\hardware solution that introduces new tools and features making the process of data capture more efficient with visual checking.



A model boat with an onboard echo sounder is connected to a land based PC via long range blue tooth. A Leica Total Station tracks the boat automatically via an on-board 360 deg prism and sends its position to the PC, removing Latency.



4Site Sonar showing Project Tree and Hydrographic Survey Registered on an OS Drawing

Sonar Boat Specifications



- 360 Prism for Total Station tracking
- OHMEX Sonarmite Transducer
- Long Range Class 1 BT
- Radio Controlled
- Catamaran hull for stability
- 2 electric motors (5 km/h)
- 2 hours normal use , 10 minute backup battery
- ED lights for low light conditions